



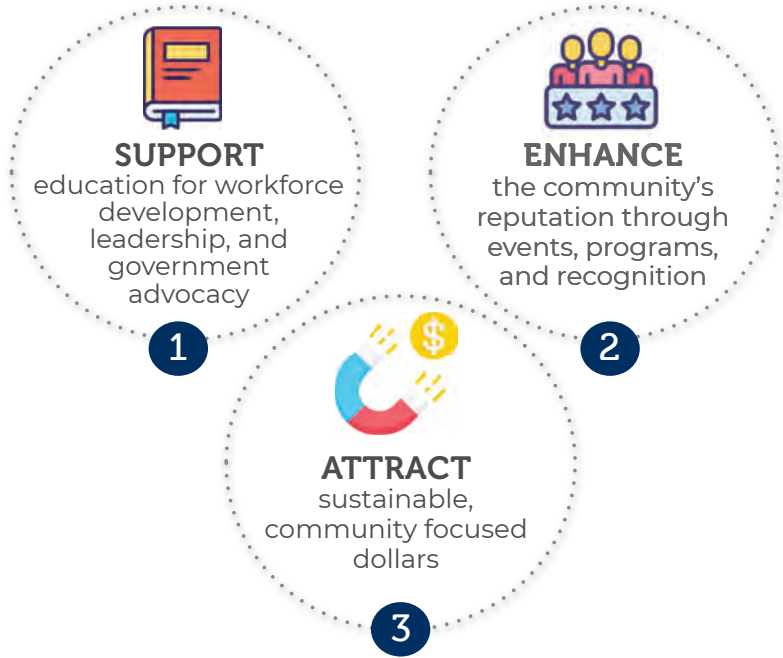
### FOUNDATION TIMELINE

- 1983**  
 Chamber partners with local law enforcement agencies to present the **Clermont County Law Enforcement Appreciation Banquet** during National Police Week. The Chamber's \$50,000 UC Clermont College scholarship endowment was officially funded in 2022.
- 1988**  
 Leadership Clermont County is developed. Program name evolves to LEAD Clermont Institute, LEAD Clermont Academy (2012), and **LEAD Clermont Community Leadership Program** (2019). LEAD alumni consists of 950 leaders.
- 1990s**  
 Chamber holds first golf outing, Gather on the Green. Event name later changed to **Golf for Kids** to benefit the Work Readiness Initiative.
- 1994**  
**Salute to Leaders Awards** is created to honor Clermont County volunteers.
- 2011**  
**Clermont Chamber of Commerce Foundation** is established as a 501(c)(3) charitable entity. The foundation celebrated its 10th anniversary in 2011.
- 2012**  
**Work Readiness Initiative** is created to partner with schools and businesses to prepare students to be "work ready."
- 2016**  
**KLiCWOW** is born. Program provides free tablets and WOW pouches to Clermont County children ages three & four to help them become better prepared for K-12 education. 1,065 tablets and WOW pouches distributed to date.



The **MISSION** of the **CLERMONT CHAMBER OF COMMERCE FOUNDATION** is to champion the educational, economic development, and community service initiatives of the Clermont Chamber.

### 3 areas of focus



**2022 OFFICERS**  
**BOARD CHAIRMAN:** Jeff Bauer, UC Clermont College  
**VICE CHAIRMAN:** Eric Hunziker, American Modern  
**TREASURER:** Steve Hood, Brixey & Meyer  
**SECRETARY:** Letitia Fulkerson, Letitia Fulkerson State Farm Agency  
**CHAIRMAN EMERITUS:** Stewart Greenlee, CenterBank  
**PRESIDENT:** Joy Lytle, Clermont Chamber of Commerce

**2022 BOARD OF DIRECTORS**  
 Andy McCreanor, Alloy Development Co., Inc.  
 Kim Patton, HealthSource of Ohio  
 Tom Rocklin, Siemens Digital Industries Software

### PROGRAMS FEEDBACK



“ LEAD allowed me the opportunity to get to know the communities we serve on a much deeper level. The ability to network with fellow Clermont County professionals has strengthened our organization and has given us the opportunity to strive toward our Vision of enabling our communities to thrive. I am grateful that we have such an engaged business community that provides a fun and relaxing environment for our organization to grow and increase our level of community impact. ”

**SHANE KNISLEY**  
 President, Mercy Health – Clermont Hospital  
 LEAD Clermont Class 2021

“ I like seeing the variety of successes across the county. There is a lot of good going on, and I appreciate the Chamber's efforts to highlight the positives. ”

**SALUTE TO LEADERS  
 EVENT ATTENDEE**

“ This is such a great program to help prompt kindergarten readiness as well as language and literacy. ”

**PARENT OF KLICWOW  
 PARTICIPANT**

### SPONSORS + PARTNERS

